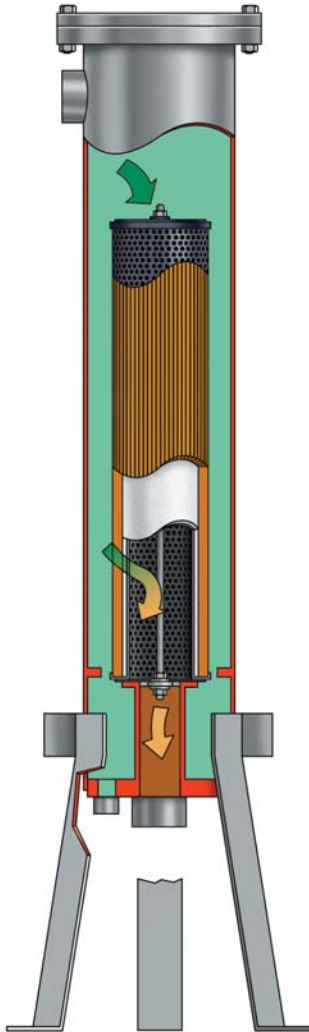


VFGM Series SuperFlex™ Monitor Housings



emulsified water, remove ultra-fine solids, and shut down system flow when hit with a localized slug of water. They are designed to flow from the outside to inside at a rate of 4 gallons (15.14 liters) per inch of length.

Facet's VFGM Series SuperFlex monitor housings are built to ASME Code, constructed of carbon steel. Stainless steel construction is available. Contact your Facet Representative for details. They are furnished with FG-O Series 6" monitor cartridges that meet the latest edition of Institute of Petroleum (I.P.) Specifications and Qualification Procedures—Aviation Fuel Filter Monitors With Absorbent Type Elements.

STANDARD HOUSING DESIGN

- Welded carbon steel construction
- ASME Code, Section VIII construction, stamped and certified
- Design pressure: 250 psi @ 250°F
- Main closure: Blind flange
- Head gasket: Buna-N—other materials available on request
- Vent connection: $\frac{3}{4}$ " NPT
- Drain connection: $\frac{3}{4}$ " 3000# NPT
- Inlet and outlet connections: 2" 3000# NPT
- Differential pressure gauge connection: $\frac{1}{8}$ " NPT
- Interior: Epoxy coated
- Exterior: Prime coated

ELIMINATE THE NEED FOR OTHER WATER DEFENSE DEVICES AND RECEIVE MAXIMUM WATER REMOVAL, SOLIDS HOLDING CAPACITY AND SHUTDOWN PROTECTION TO ASSURE CLEAN, DRY FUEL DELIVERY WHILE MEETING THE LATEST INSTITUTE OF PETROLEUM (I.P.) SPECIFICATION

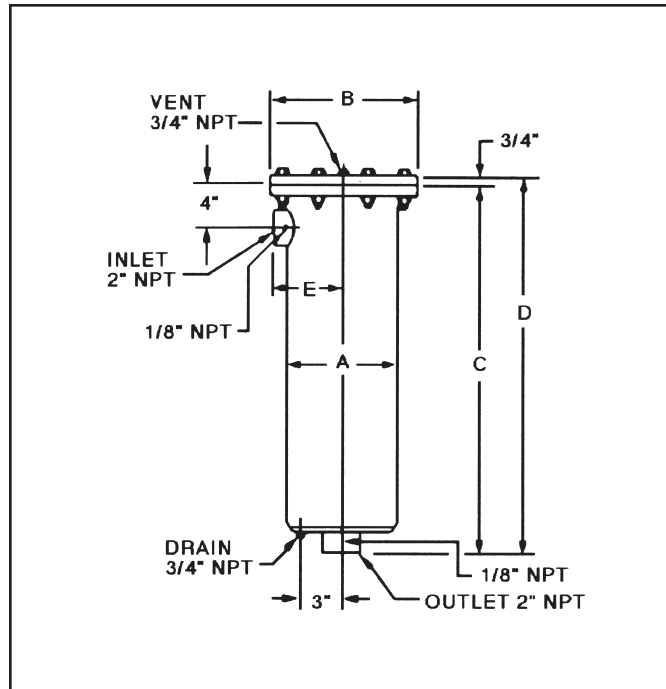
The Facet VFGM Series SuperFlex monitor housings, equipped with FG-O Series 6" (152 mm.) OD monitor cartridges, continually check for the entire flow of fuel, not just mere samples, for water or solids contamination. By performing three jobs, the monitors assure clean, dry fuel. They absorb free and

OPTIONS

- Air eliminator
- Air eliminator check valve
- Manual drain valve
- Pressure gauge assembly
- Pressure relief valve
- Sampling probe
- Adjustable support stand

Due to our continuing program of improvement, specifications are subject to change without notice.

VFGM Series SuperFlex™ Monitor Housings



HOUSING DATA

| MODEL NUMBER | FLOW RATE | | A | | B | | C | | D | | E | | WEIGHT | | LIQUID VOLUME | |
|--------------|-----------|-----|-------------------------------|-----|--------------------------------|-----|--------------------------------|------|--------------------------------|------|-------------------------------|-----|--------|------|---------------|-------|
| | gpm | lpm | in. | mm. | in. | mm. | in. | mm. | in. | mm. | in. | mm. | lbs. | kgs. | gals. | ltrs. |
| VFGM-1C-1614 | 58 | 220 | 8 ⁵ / ₈ | 219 | 11 ⁵ / ₈ | 295 | 31 | 787 | 31 ³ / ₄ | 806 | 5 ¹ / ₂ | 140 | 110 | 50 | 7 | 26 |
| VFGM-2C-1629 | 116 | 439 | 8 ⁵ / ₈ | 219 | 11 ⁵ / ₈ | 295 | 45 ¹ / ₂ | 1155 | 46 ¹ / ₄ | 1175 | 5 ¹ / ₂ | 140 | 125 | 57 | 10 | 38 |
| VFGM-3C-1643 | 174 | 659 | 8 ⁵ / ₈ | 219 | 11 ⁵ / ₈ | 295 | 59 ¹ / ₂ | 1511 | 60 ¹ / ₄ | 1530 | 5 ¹ / ₂ | 140 | 151 | 68 | 13 | 49 |

Model numbers include housing, cartridge mounting hardware, and cartridges not installed.
 All dimensions, weights and volumes are for estimating only.